

AUTOMATIC BARRIERS FOR MOTOR VEHICLES

Spin^{ENC}

A BARRIER THAT PROTECTS YOUR WORLD

- SPIN is a non-reversible electro-mechanical gearmotor, suitable for automating car parks or accesses to private areas.
- Solid, sturdy load-bearing structure, in cataphoresis treated steel painted with polyester powders, or a version with hood and hatch in stainless steel sheet.
- Personalised release key for manually moving the barrier in case of a power cut.
- Integrated control board with separate opening and closing inputs, electrical and mechanical limit-switches supplied standard.
- ENCODER for greater control of forces, and reverses motion in case of impact.

FREQUENCY NOT ONLY AT LOW VOLTAGE

- The special attention addressed to the choice of the type of reduction and motor, has made it possible to produce 230/115 Vac models with high use frequency, up to over 350 cycles/hour.
- Rapidly transforms from right-hand to left-hand version.

FIELD OF APPLICATION

- Available in several versions: 230V / 115V / 24V
- Three models with or without integrated control board, SPIN 3 and 4 for rapid services, SPIN 6 for large entrances.
- The 24V models are an important resource to increase the frequency of manoeuvres in case of intensive use.



Power supply 24V recommended for an intensive use.

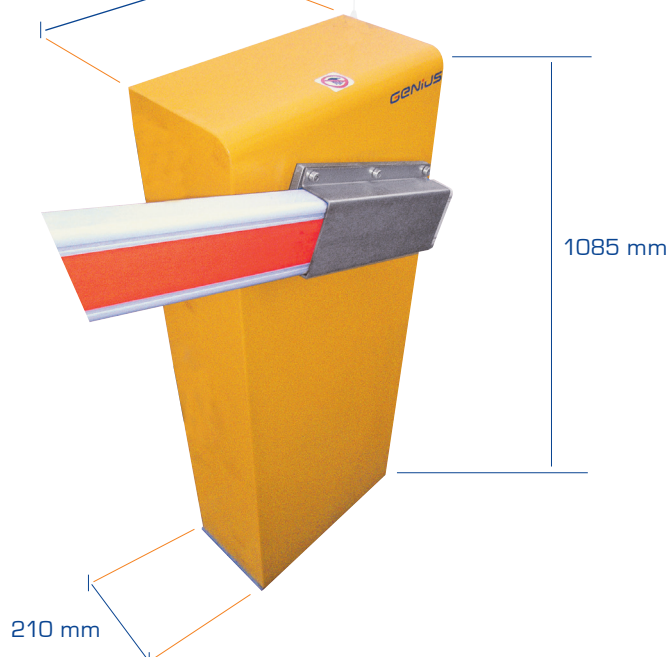
| Model | Version | Pcs./Pallet | Code | € |
|------------------|--|-------------|---------|---|
| SPIN 424 | Non-reversible, power supply 24 Volt with control board | 8 | 58A0761 | |
| SPIN 3C ENC | Non-reversible, fast, with encoder and control board | 8 | 6130026 | |
| SPIN 3 - S | Non-reversible, fast, without encoder and control board | 8 | 6130001 | |
| SPIN 3C ENC INOX | Non-reversible, fast, with encoder and control board, stainless steel hood | 8 | 6130030 | |
| SPIN 4C ENC | Non-reversible, with encoder and control board | 8 | 6130027 | |
| SPIN 4 - S | Non-reversible, without encoder and control board | | | |
| SPIN 4C ENC INOX | Non-reversible, with encoder and control board, stainless steel hood | 8 | 6130031 | |
| SPIN 6C ENC | Non-reversible slow, with encoder and control board | 8 | 6130028 | |
| SPIN 6 - S | Non-reversible, without encoder and control board | 8 | 6130003 | |
| SPIN 6C INOX | Non-reversible slow, with encoder and control board, stainless steel hood | 8 | 6130032 | |

GENIUS 106

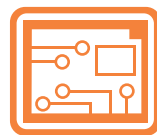


DIMENSIONS

360 mm (Spin 3/4)
410 mm (Spin 6)



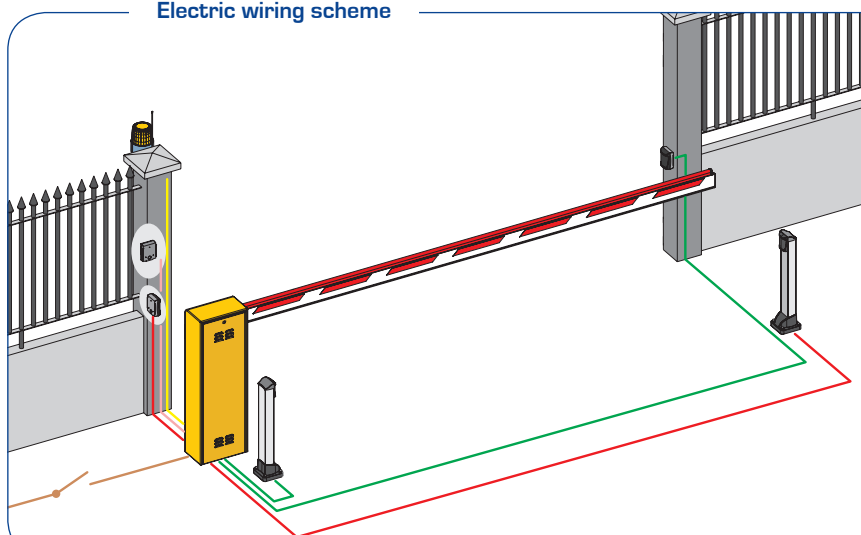
CONTROL BOARDS



LYNX 06 (Page 116)
LYNX 03 (Page 119)



Electric wiring scheme



| | |
|-----------------------|-----------------------|
| Line | 3x1,5 mm ² |
| Motor* | 4x1,5 mm ² |
| Blinker | 2x1,5 mm ² |
| Key-operated selector | 2x0,5 mm ² |
| Tx photocells | 2x0,5 mm ² |
| Rx photocells | 4x0,5 mm ² |
| BUS connections | 2x0,5 mm ² |

*For 24Vdc motor, use thread from 2x2,5mm²
- distance max. between motor and the control board 10m.

| Technical specifications | SPIN 3 ENC | SPIN 4 ENC | SPIN 424 | SPIN 6 ENC |
|---|------------------|------------------|------------------|------------------|
| Power supply (Vac) | 230 | | 24 | 230 |
| Power (W) | 250 | | 100 | 380 |
| Current (A) | 1.1 | | 3.5 | 1.7 |
| Heat protection (°C) | 140 | | - | 140 |
| Capacitor (µF) | 12.5 | | - | 12.5 |
| Torque max. (Nm) | 60 | 100 | 100 | 150 |
| Opening time (sec) ⁽¹⁾ | 2.5 | 4 | 4 | 8 |
| Max. beam length (m) ⁽²⁾ | 3 ⁽²⁾ | 5 ⁽²⁾ | 5 ⁽²⁾ | 7 ⁽²⁾ |
| Type and frequency of use at 20 °C | S3 - 50% | | 100% | S3 - 60% |
| Indicative hour cycles at 20°C ⁽¹⁾ | ≥360 | ≥225 | ≥450 | ≥130 |
| Operating ambient temperature | -20°C + 55°C | | -20°C + 55°C | -20°C + 55°C |
| Operator weight (Kg) | 63 | | 63 | 69 |
| Protection class | IP44 | | IP44 | IP44 |

[1] Opening time and number of cycles calculated for correctly executed installations at the dimensions indicated in the installation instructions and without slow-downs.

[2] No type of accessory can be fitted on the beams installed on Spin 3 models.

- The articulated kit cannot be installed on beams of over 4 meters installed on Spin 4 models.

- On Spin 424 the beam with mobile support and skirt can be mounted only up to 4m

- No type of accessory can be fitted on beams of over 6 meters installed on Spin 6 models.





ACCESSORIES FOR SPIN



BEAMS FOR SPIN 3* - SPIN 4

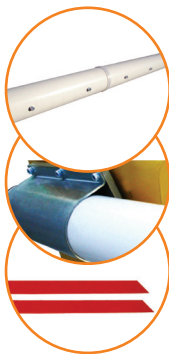
Aluminium beam painted with white epoxy powders, complete with retroreflecting stickers and rubber profile. Dimensions 90 x 25.

| Model | Length (m) | Useful (m) | Code | € |
|----------|------------|------------|---------|---|
| Beam 3* | 3 | 2,66 | 58P1802 | |
| Beam 4 | 4 | 3,66 | 58P1803 | |
| Beam 5** | 5 | 4,66 | 58P1818 | |

SPRINGS FOR SPIN 3 - SPIN 4



| Beam only (m) | Articulated Beam (m) | Beam and mobile support (m) | Beam and skirt (m) | Beam with lights (m) | Spring thickness (mm) | Code | € |
|---------------|----------------------|-----------------------------|--------------------|----------------------|-----------------------|---------|---|
| 2 - 2,7 | 2 - 2,7 | | | 2 - 2,4 | 4 - White | 58F1811 | |
| 2,7 - 3,4 | 2,7 - 3,4 | 2 - 2,7 | 2 - 2,7 | 2,4 - 2,9 | 4,5 - Red | 58F1812 | |
| 3,4 - 4 | 3,4 - 4 | 2,7 - 3,4 | 2,7 - 3,4 | 2,9 - 3,4 | 5 - Green | 58F1813 | |
| 4 - 4,6 | | 3,4 - 4 | 3,4 - 4 | 3,4 - 4 | 5,5 - Yellow | 58F1814 | |
| 4,6 - 5 | | 4 - 5 | 4 - 4,6 | | 6 - Blue | 58F1815 | |
| | | | 4,6 - 5 | | 6,5 - Grey | 6100126 | |



CYLINDER BEAMS FOR SPIN 6

Aluminium cylinder beam Ø 100 mm, painted with white epoxy powders.

| Denomination | Code | € |
|--|---------|---|
| Cylinder Beam L 6000 D 100 Spin 6 | 6100170 | |
| Cylinder Beam L 7000 D 100 Spin 6 | 6100171 | |
| Kit of two parts Beam L 7000 (2x3500) D 100 Spin 6 | 6100169 | |
| Pocket for cylinder Beam D 100 | 6100167 | |
| Stickers kit for cylinder Beam D 100 Spin 6 | 6100168 | |



BEAMS FOR SPIN 6

Aluminium beam painted with white epoxy powders, complete with retro-reflecting stickers. Dimensions 100 x 50.

| Model | Length (m) | Useful (m) | Code | € |
|----------|------------|------------|---------|---|
| Beam 5** | 5 | 4,62 | 58P1804 | |
| Beam 6** | 6 | 5,62 | 58P1805 | |
| Beam 7** | 7 | 6,62 | 58P1817 | |

SPRINGS FOR SPIN 6



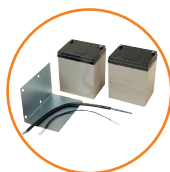
| Beam only (m) | Beam and mobile support (m) | Beam and skirt (m) | Full cylinder Beam (m) | Two parts cylinder Beam (m) | Spring thickness (mm) | Code | € |
|---------------|-----------------------------|--------------------|------------------------|-----------------------------|-----------------------|---------|---|
| 4 - 4,8 | | | 4,3 - 4,9 | 4 - 4,6 | 6 - White | 58F1816 | |
| 4,8 - 5,5 | 4 - 4,8 | 4 - 4,8 | 4,9 - 5,6 | 4,6 - 5,4 | 6,5 - Red | 58F1817 | |
| 5,5 - 6,3 | 4,8 - 5,5 | 4,8 - 5,5 | 5,6 - 6,5 | 5,4 - 6,4 | 7 - Green | 58F1818 | |
| 6,3 - 7 | 5,5 - 6 | 5,5 - 6 | 6,5 - 7 | 6,4 - 7 | 8,5 - Yellow | 6100024 | |

* PLEASE NOTE. For the SPIN 3 model, beams with a length of over 3 m cannot be used.

** PLEASE NOTE. For shipments of beams of over 4m, please contact the shipping office.



ACCESSORIES FOR SPIN



BATTERY KIT

Battery Kit 12V-4 Ah dimensions 90X70X108 mm. with cables and support for fixing inside the hood of SPIN 424.

CODE
6100206



ARTICULATED KIT

Articulated beam KIT for SPIN 4 (max. 3 m useful length).

CODE
58P1810



RELEASE KEY

Set of 6 additional release keys.

CODE
58P2081



RADIOFREQUENCY MODULE

Radiofrequency module RQFZ with 3 PIN Molex connection for GENIUS control board.

Frequency 433 Mhz BRAVO

CODE
6100145

Frequency 868 Mhz AMIGO

CODE 6100146



SKIRT

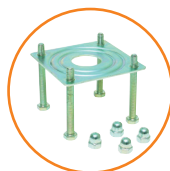
SKIRT KIT in painted aluminium

Length 2 m.

CODE
6100079

Length 3 m.

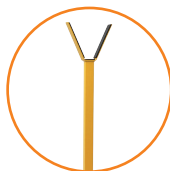
CODE
6100080



APF FOND

APF foundation plate for fixed support.

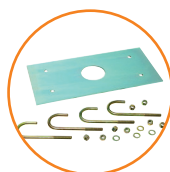
CODE
58P1808



APF

APF fixed support for Spin 6 beam.

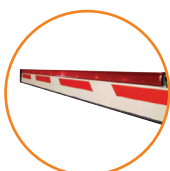
CODE
58F1850



SPIN FOND

SPIN foundation plate with accessories for SPIN 3/4/6.

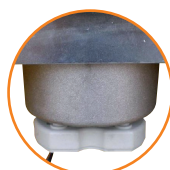
CODE
58P1800



LIGHT KIT

Light kit for SPIN 4 to be applied on beams up to 4 m.

CODE
6100172



KIT ENCODER

Kit encoder for SPIN ENC matchable with LYNX 06 control board.

CODE
6100260



APM

APM mobile support for beam.

CODE
58P1809

DEVICES



Obstacle
detections (page 122)



Safety
(page 124)



Radio controls
(page 126)



Control
(page 128)

GENIUS 109