

Swing gates operators for opener

Electromechanical

Model 4 : 230V - 24V DC

Model 6 : 230V - 24V DC



Instructions and warnings for installation and use

WARNINGS AND GENERAL PRECAUTIONS

Safety warnings

WARNING! - Important safety instructions. The following instructions are critical for personal safety. Incorrect installation can result in serious injury.

Read these instructions with care before starting; in case of doubt, contact Support Service.

WARNING! - Keep these instructions in a safe place to enable future product maintenance and disposal operations.

the above, all product installation, connection, programming and maintenance work must be done exclusively by a skilled and qualified technician, in observance of local laws, standards, regulations and the instructions in this manual.

Installation warnings

Do not install the device in reverse. (Do not reverse the device)

Before commencing the installation, check that this product is suitable for controlling your gate (see Chapters 3 and 9). If it is not suitable, DO NOT proceed with the installation.

All product installation and maintenance must be done with the automated mechanism disconnected from the power mains. Before starting work, put a sign on the disconnection device that says **CAUTION! MAINTENANCE IN PROGRESS** to the disconnection " equipment. Check the cable connection.

Handle the product with care during installation, taking care to avoid crushing, denting or dropping it, or contact with liquids of any kind. Keep the product away from sources of heat and naked flames. Failure Do not modify any part of the product. Operations other than as specified can only cause malfunctions. The manufacturer declines all liability for damage caused by makeshift modifications to the product. If the gate or door being automated has a pedestrian gate, then the system must include a control device that will inhibit the operation of the motor when the pedestrian gate is open.

Check that there are no points where people could become trapped or crushed against fixed parts when the gate is fully open; if there are, provide protection for these parts.

This product is an integral part of the automation and must be scrapped with it.

This product is made up of a variety of materials, some of which can be recycled while others must be disposed of. Check that regulatory recycling and scrapping facilities are available locally. Caution! – some parts of the product may contain polluting or hazardous substances which, if disposed of into the environment, constitute serious environmental and health risks.

As indicated by the symbol, the product may not be disposed of as domestic waste.

Sort the materials for disposal, according to the methods envisaged by current legislation in your area, or return the product to the retailer when purchasing a new version.

Notice Figure 14.

Careful in standard installation is important.

The device should not be installed in reverse.

For swing gates with leaves up to 4m to 600 Kg. Telescopic electromechanical gear motor, surface mounted. Ideal for residential, commercial and factory use. Suitable for any architectural context. versatile, thanks to its rod shape, available in 2 versions with stroke up to 400mm and 500mm, the motor is suitable for any kind of swing gates. Streamlined design, suitable for modern architectural context. Reliable and durability, thanks to the sturdy case made up by die-cast aluminium with static color painting; stainless steel 304L rod.

Generously sized and practical connection compartment: rapid and easy access form above to internal parts located in the upper section of the motor.

A photocell safety sensor is required.

Easy to instal: thanks to the new fixing brackets supplied and the easily adjustable rear fixing. With welding and without welding.

Easy to: emergency unlocking device key.

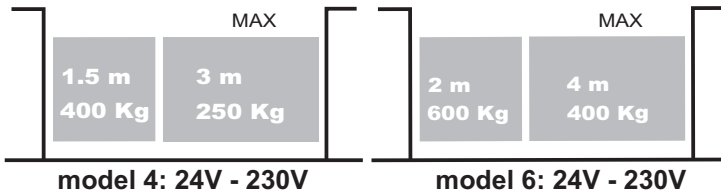
also available key with optional profile cylinder.

Practical release: with personalized key in the upper section of the motor.

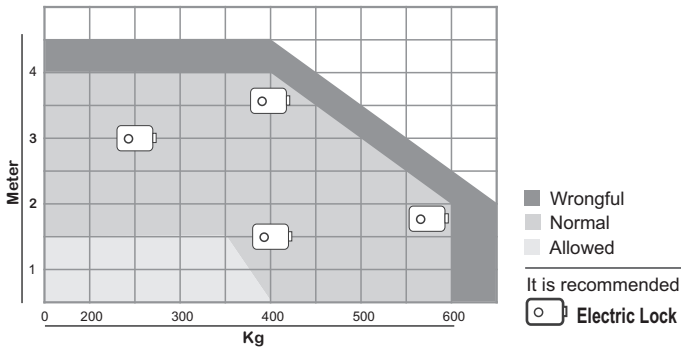
Be careful! Choose the recommended control unit (24 V or 220 V)

Recommended: Use an electric lock for door safety.

Also available in practical kit solutions.



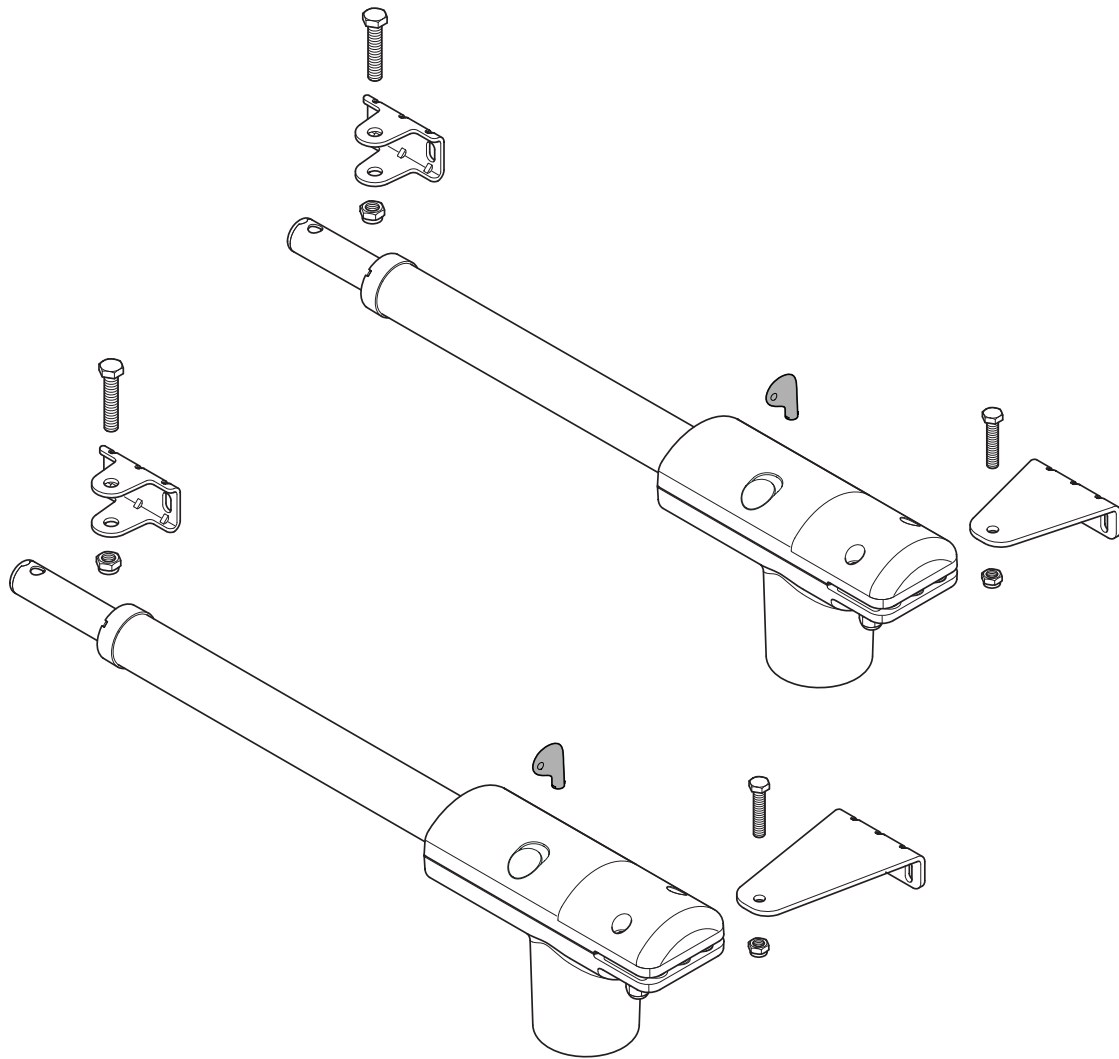
Utilisation limites
Ability : Strength , Length , Weight



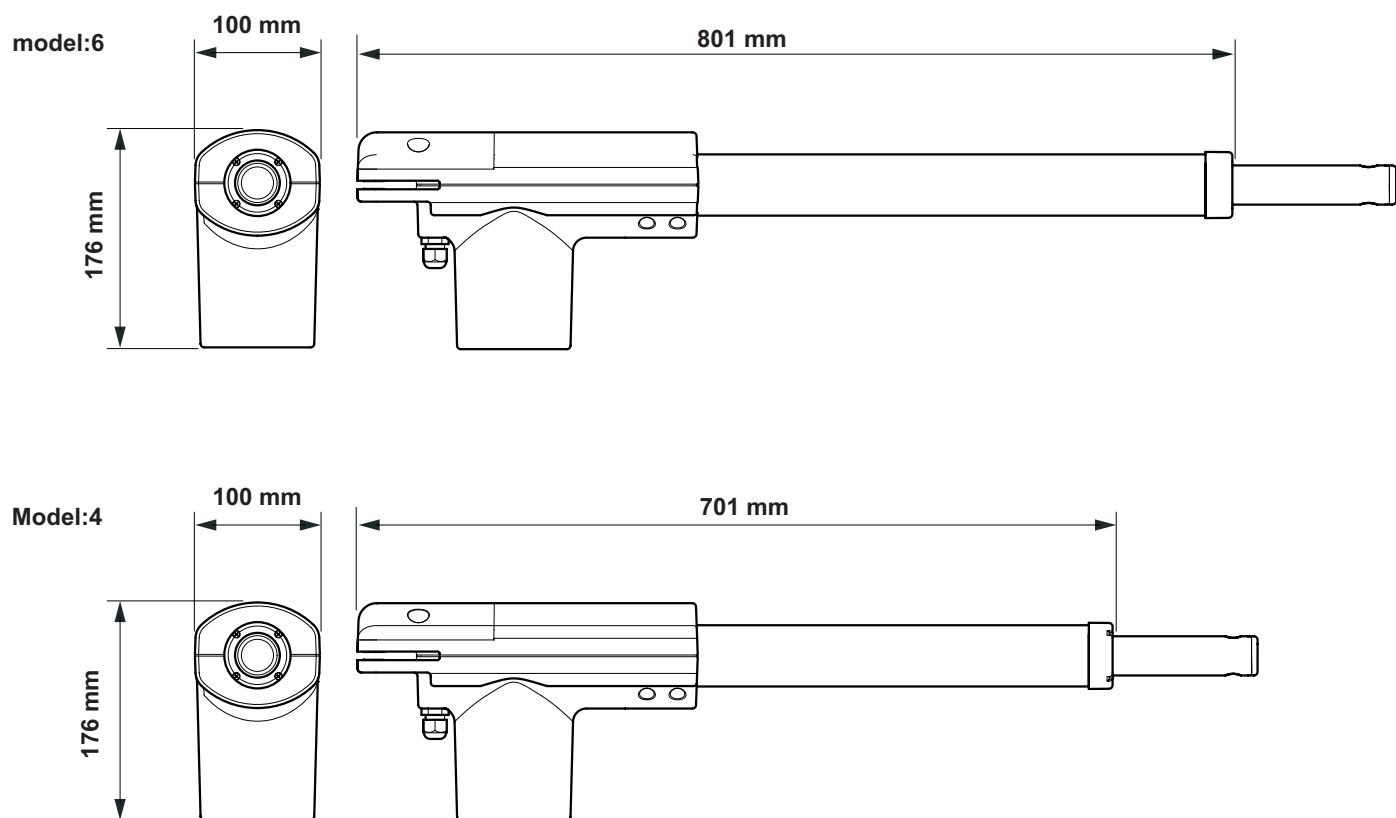
TECHNICAL DATA

MODEL	6 - 220V	6 - 24V	4 - 220V	4 - 24V
Motor voltage [V]	230	24	230	24
Frequency [Hz]	50	DC	50	DC
Max gate length [m]	4	4	3	3
Max gate weight (kg)	400	400	250	250
IP protection rating	54	54	54	54
Operating temperature [C°]	-20 to +70	-20 to +70	-20 to +70	-20 to +70
Weight of motor [kg]	6	5.5	6	5.5
Speed [m/s]	0.018	0.014	0.018	0.014
Travel [mm]	500	500	400	400
Capacitor [mF]	8	-	8	-
Nominal current draw [A]	1.1	1.1	1.1	1.1
Maximum current draw [A]	1.5	5	1.5	5
Nominal power draw [W]	250	30	250	30
Maximum power draw [W]	340	120	340	120
Nominal force [N]	300	300	300	300
Maximum force [N]	2000	1800	2000	1800
Cycles (cycles/hour)	50	continuous	50	continuous
Rpm - motor	1400	2500	1400	2500
Motor output power (W)	110	-	110	-
Direction motor	c.c.w/c.w	-	c.c.w/c.w	-
Bimetal Over Load Motor	*	-	*	-

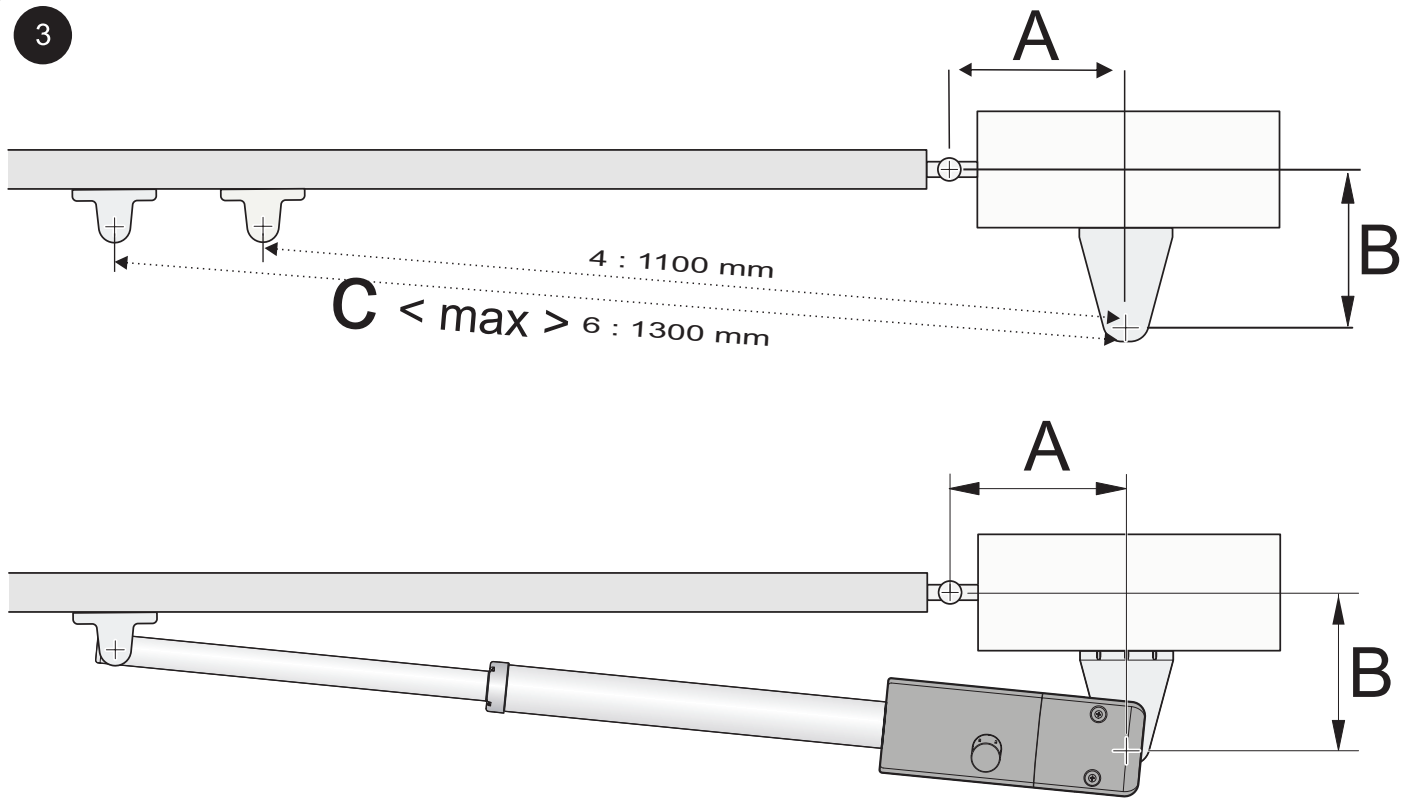
1



2

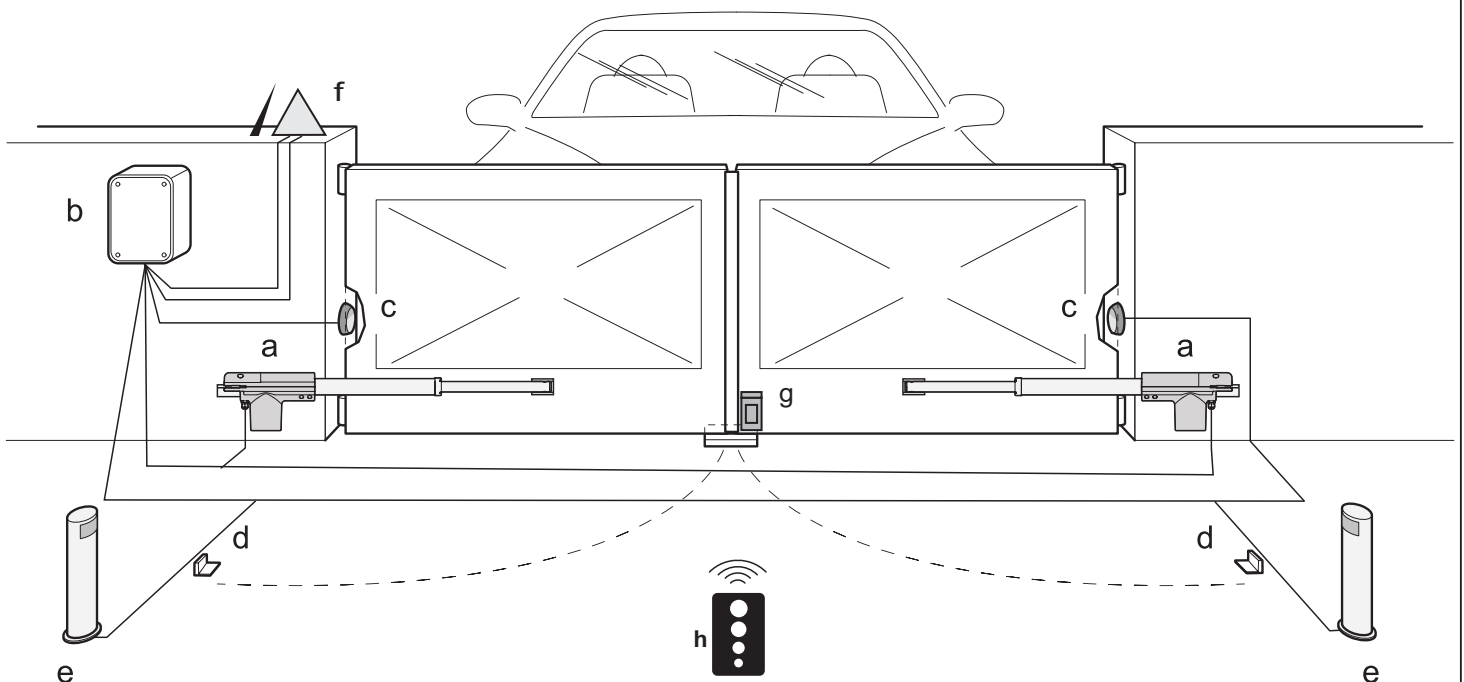


3

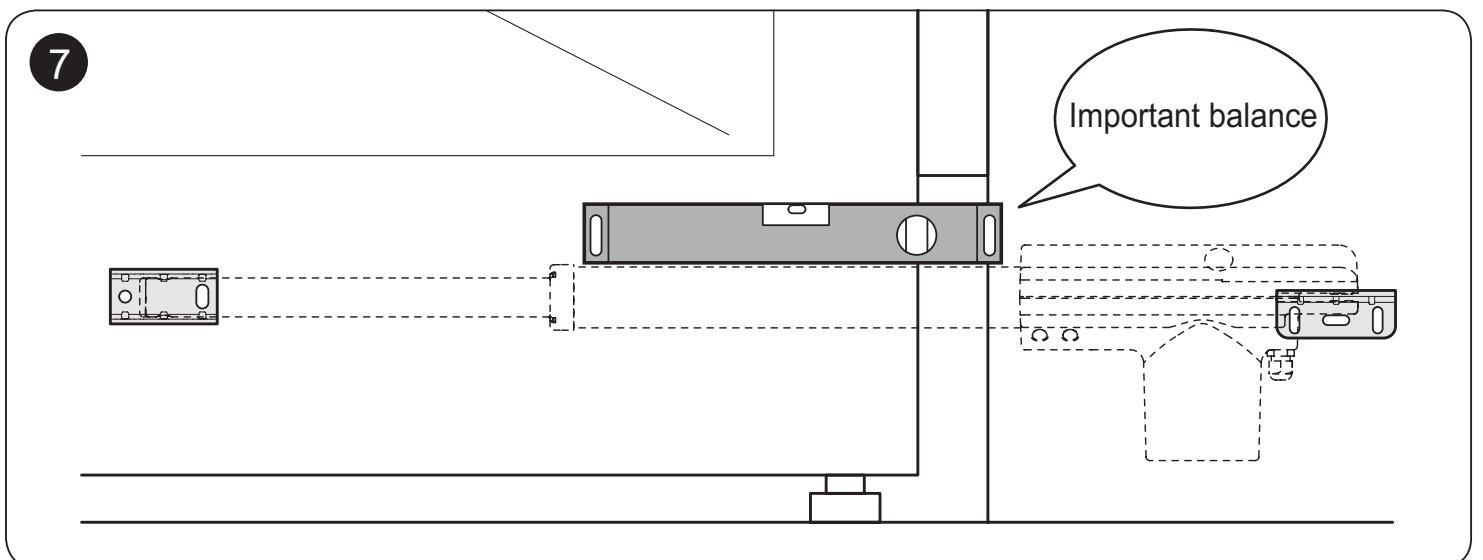
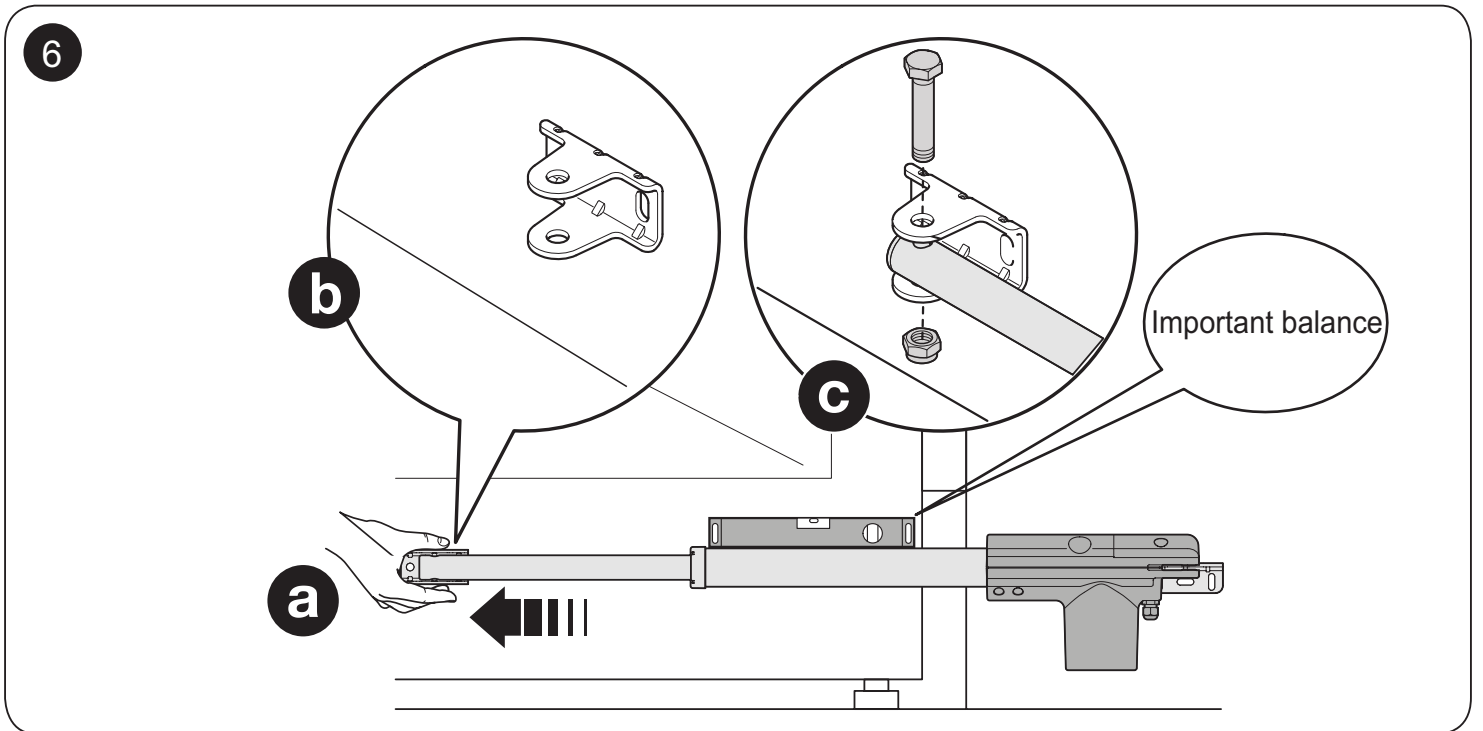
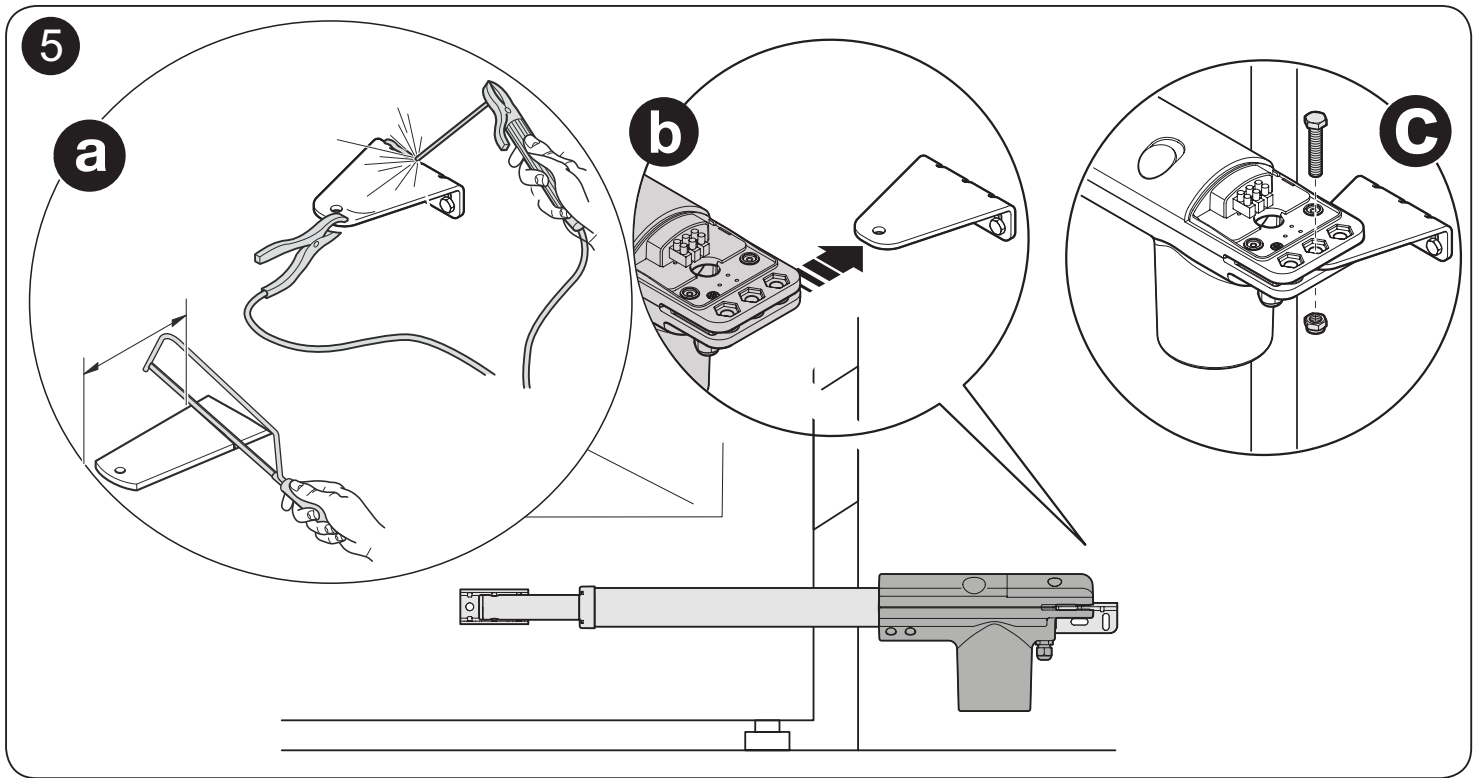


Size	α	A (mm)	B (mm)	C (mm)
4. 24 V - 230V	90°	95	270	1100
	90°	195	200	
	110°	150	150	
	120°	200	140	
	130°	210	120	
6. 24V - 230V	90°	200	270	1300
	110°	200	180	
	120°	200	160	

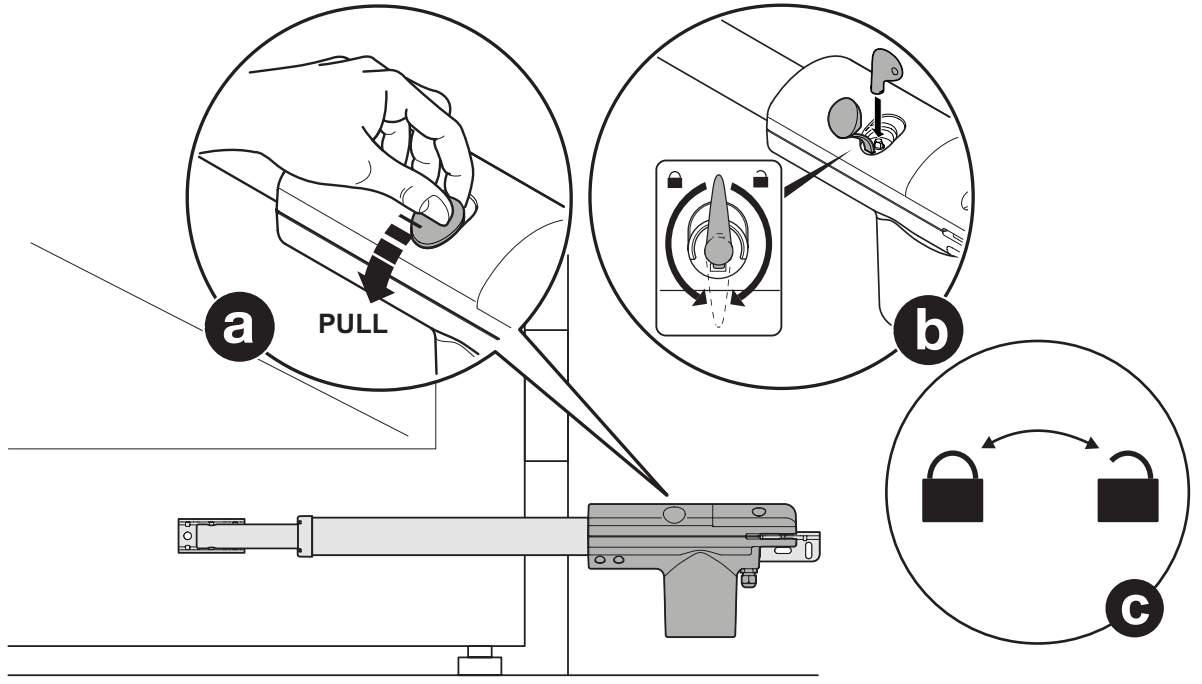
4



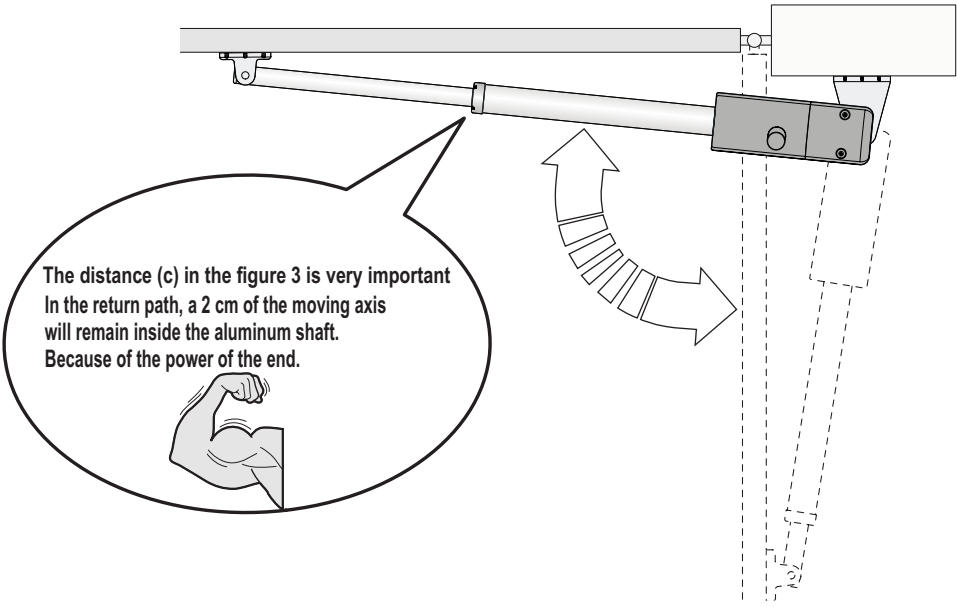
a- Electromechanical gearmotors b- Control unit c- Photocell 1 d- Mechanical limit switch for opening e- photocell 2 f- Flasher g- Electric lock h- remote control



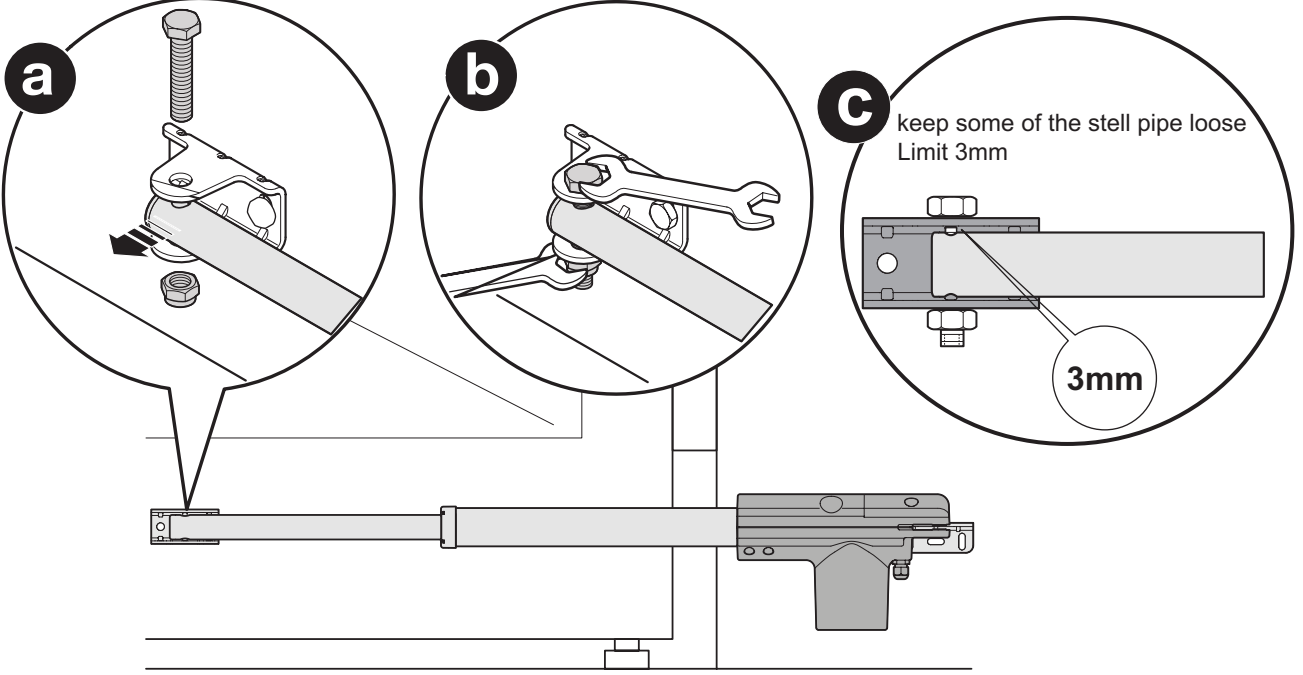
8

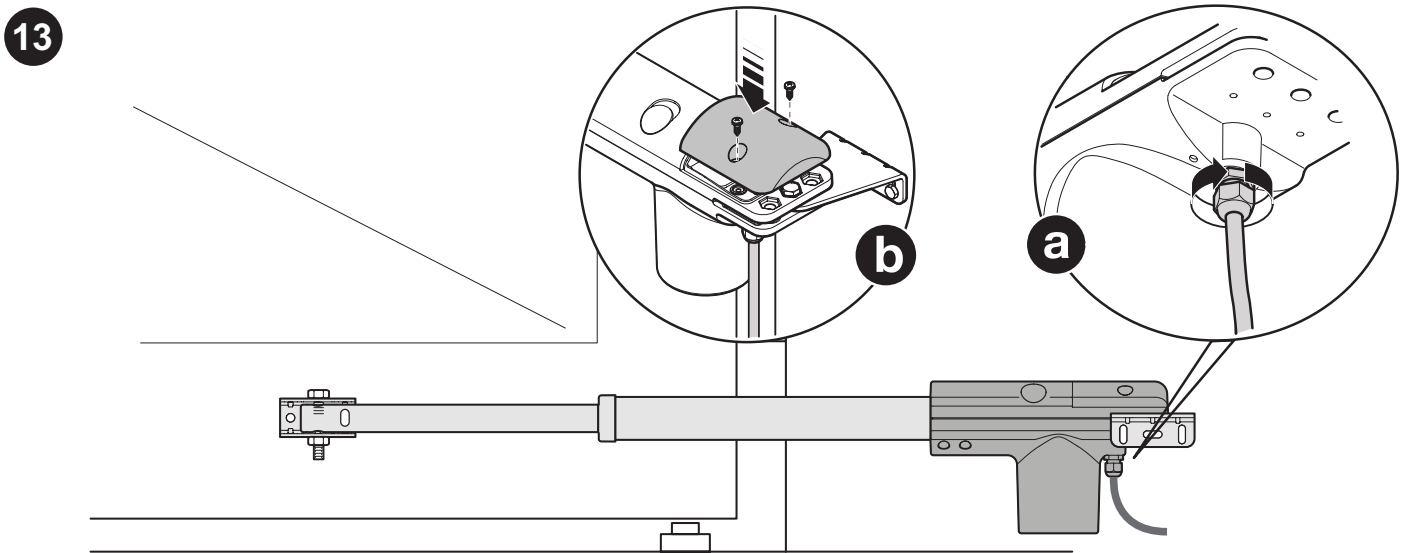
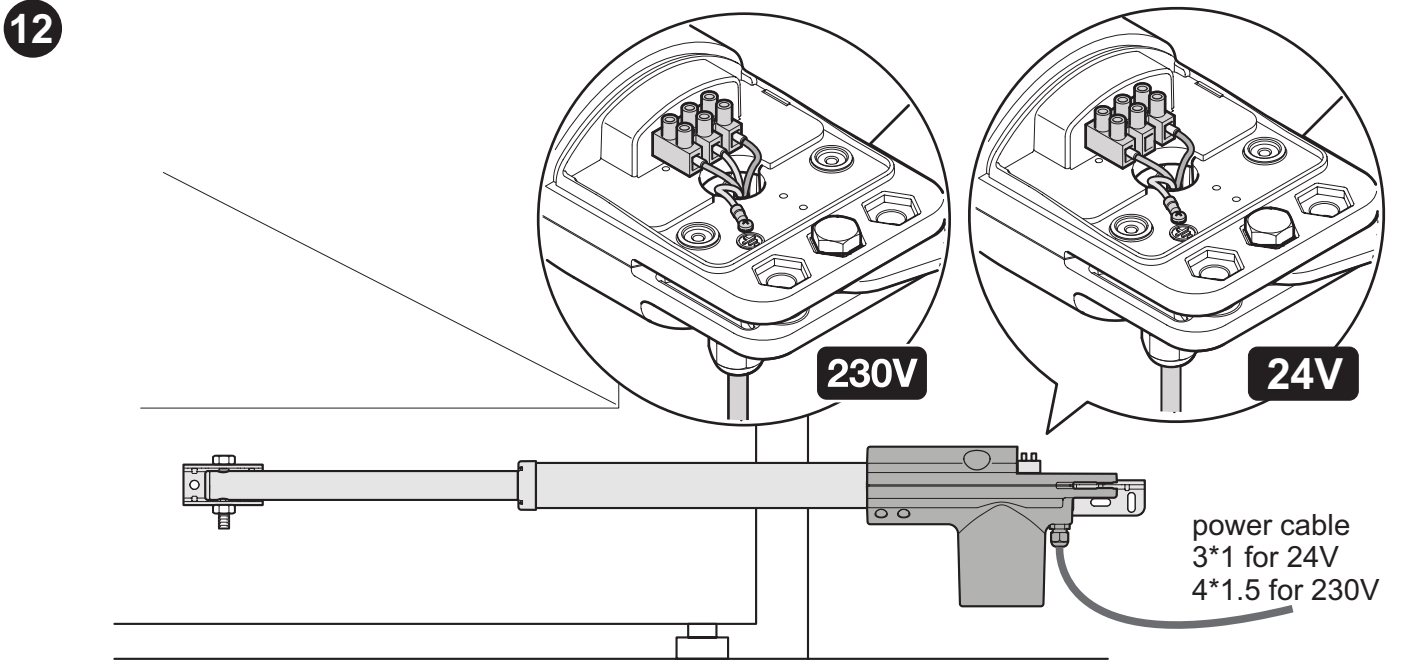
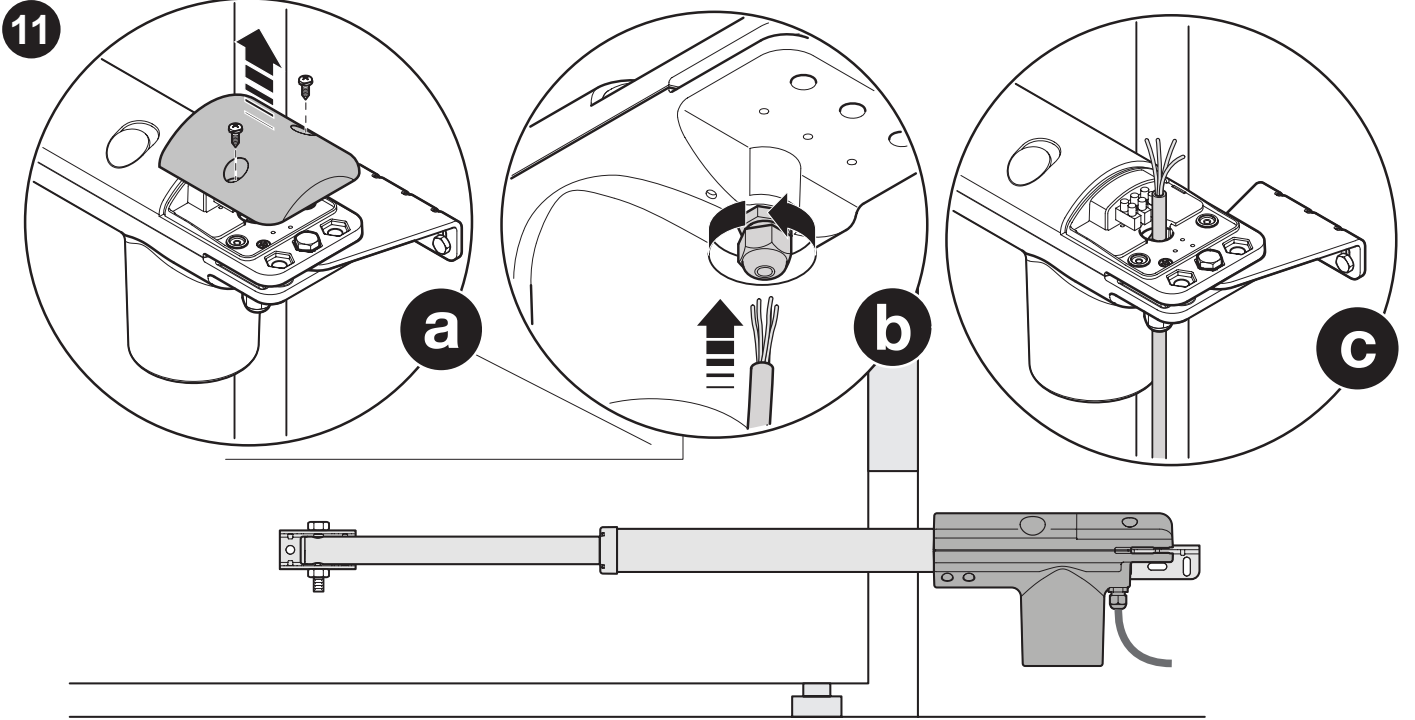


9



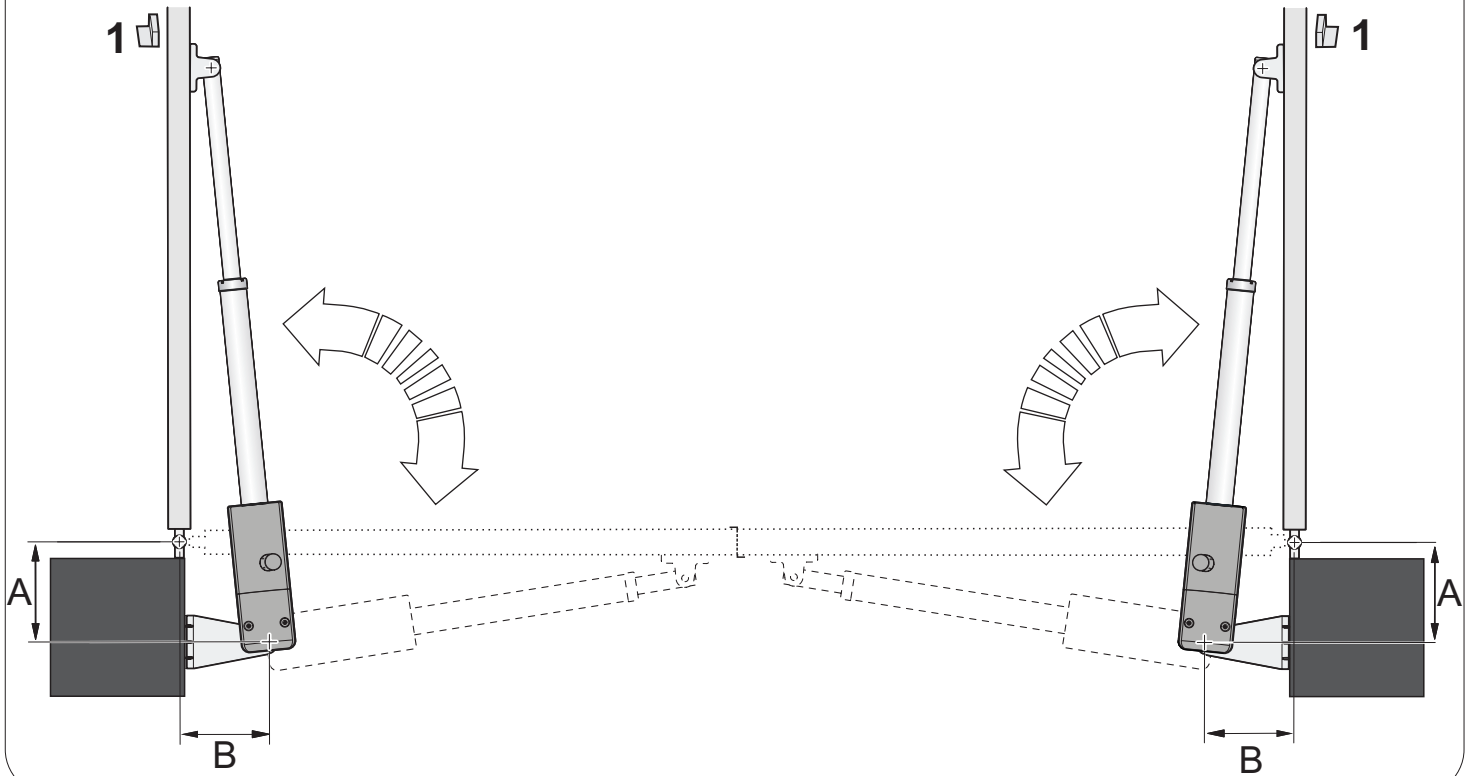
10





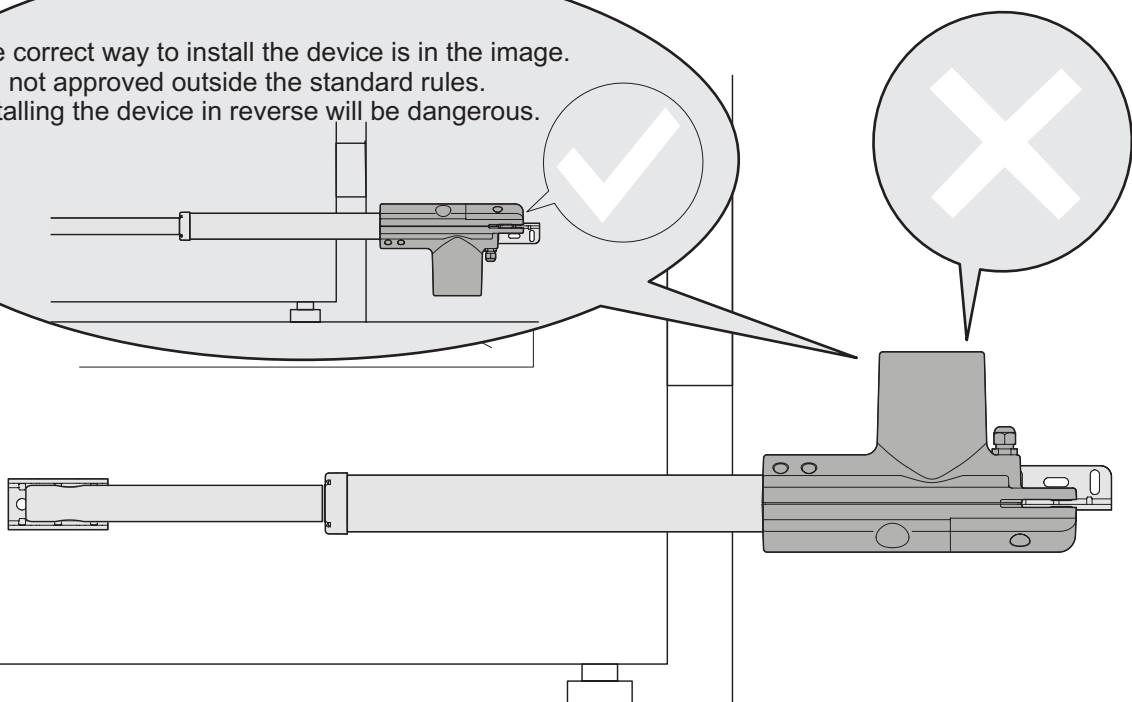
Outside the gate

If the door was outside, you could install it like an image.
The device stops like in Figure 1.



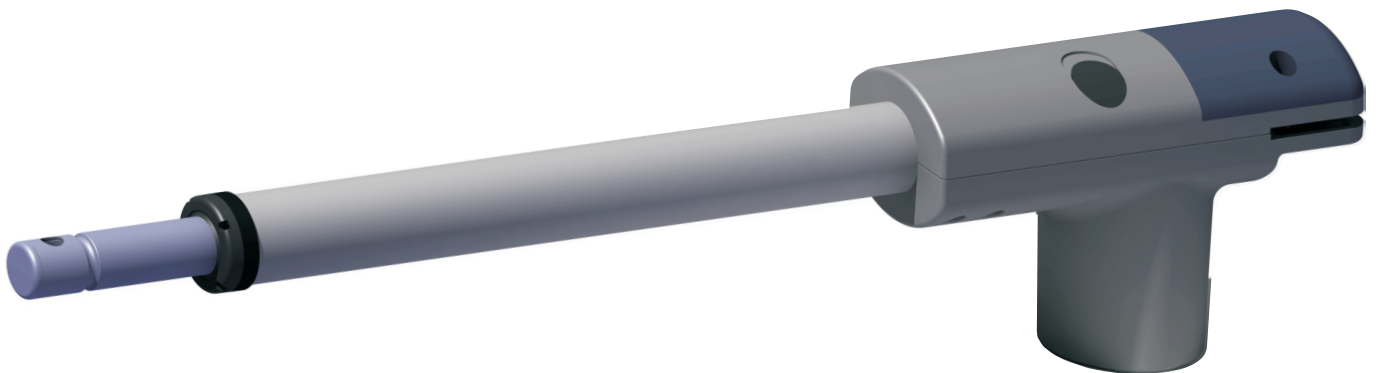
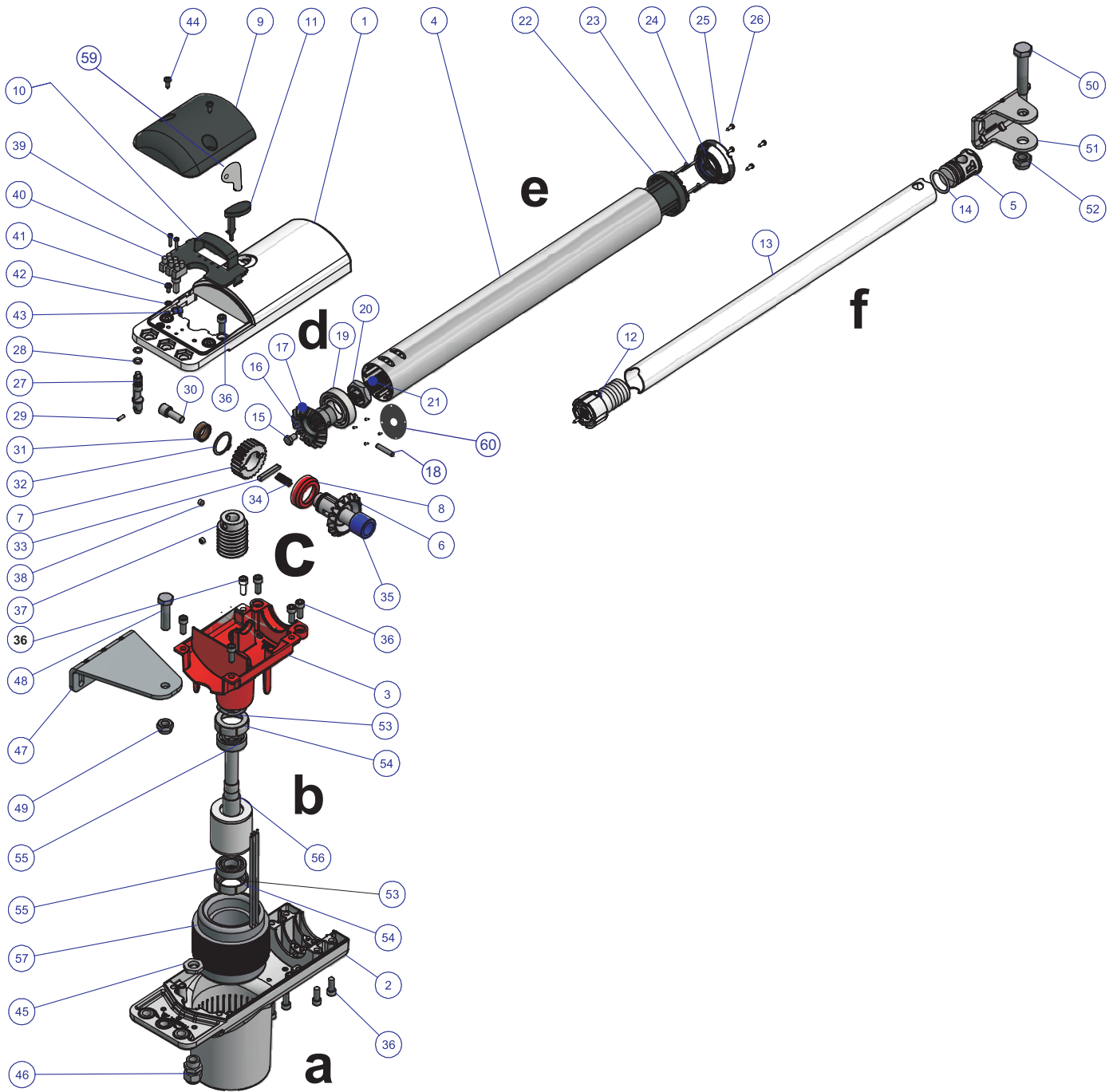
Point important

The correct way to install the device is in the image.
It is not approved outside the standard rules.
Installing the device in reverse will be dangerous.



Space Parts Components Separated

Consists of KG01 to KG60



Notes :

.....

.....

.....

.....

.....

.....

.....

.....

.....

.....

.....

.....

.....

.....

.....

.....

.....

.....

.....

.....

.....

.....

.....

.....

.....

.....

.....

.....

